

## Historic Courthouse Upstairs in the Courtroom

### Renewable Energy Overview (10:30-11:15)

Older Youth and Adult Friendly Program  
Dr. Steve Harsh, Professor and Extension Specialist in Agricultural Economics at MSU, will give a presentation on the overall energy situation, the new political climate related to energy, methods in which the US can become energy self sufficient. He will focus his program on renewable liquid fuel; explaining the process of how ethanol is produced from grain and also how bio-diesel is created bio-diesel from bio fat and oil sources.

### Wind Energy (11:15 - 12:00)

Older Youth and Adult Friendly Program  
Dr. Steve Harsh's second presentation will focus on wind energy options, explaining methods for harnessing wind energy both on a utility scale and with small wind systems. His informative program will explore the economics of wind energy as well as other alternative renewable energy sources.

### From Weasels to Wolverines (12:00 - 1:00)

Young Youth to Adult Friendly Program  
Here is a chance to get an up-close look at a group of amazing predators rarely seen. Eight different species from this family will be presented through the use of study skins and pelts in this hands-on program from Seven Ponds Nature Center by Naturalist Lois Rheume.

### Bottled Water Diversion from Great Lakes Essay Contest (1:00 - 2:00)

Youth to Adult Friendly Program  
Steve Montle, Executive Director of the Flint River Watershed Coalition will give a talk about the Great Lakes Water Diversion issue and will present awards to the essay contest winners who range from 6th to 8th grade.

### Native American Story Teller (2:00 - 3:00)

Young Youth to Adult Friendly Program  
Wayne Jackson, Tuscarora, dressed in full regalia, will use song and dance to present a historical narrative of Native American cultures. Wayne appeared in the film "Pursuit of Honor," and several videos. He has been featured in several national magazines.

### Ice Age Mammals (3:15 -3:45)

Young Youth to Adult Friendly Program  
William Heyworth will use skull replicas of a saber tooth cat, a dire wolf, and a giant beaver to look at environmental adaptations. Fossil bones and teeth will be passed around to get a feel for these now extinct animals.

## Historic Courthouse Main Floor East Room

### Great Lakes Geology (10:00 - 4:00)

Young Youth to Adult Friendly Activity  
The Flint Rock and Gem Club will feature an interactive display of Michigan rocks, minerals and fossils, with both a hands-on display and activities for everyone.

## Historic Courthouse Main Floor West Room

### Michigan Rare and Endangered Animals (10:30 - 11:15)

(2:00 - 2:45)  
Young Youth to Adult Friendly Program  
This presentation is the result of years of photography by Charles St Charles from around the state, volunteer work with federal and state officials, and many long hours of patient waiting. The presentation educates the children about the lives of some of the rarest animals in Michigan and how they became so precious. But the animals covered in this presentation are also selected because they offer a glimpse of hope and how people are making a positive difference for rare animals. Included in the presentation are stories about osprey and bald eagles, wolves, loons, piping plovers and trumpeter swans.

### North American Migrations (11:30 - 12:15)

Young Youth to Adult Friendly Program (3:00 - 3:45)  
This presentation includes material from Alaska to Mexico on migrations of birds, mammals, insects and other animals. Charles St Charles will talk about different reasons that animals migrate, how they cover great distances, where they come from and where they go, and why timing is so important in some of these migrations. Included in the presentation are snow geese, sand hill cranes, monarch butterflies, shore birds, horse shoe crabs and shorebirds, eagles and elk.

### Butterfly Metamorphosis (1:00 - 1:45)

Young Youth to Adult Friendly Program  
This presentation by Charles St Charles describes all of the steps in the life cycle of the monarch butterfly. The monarch's life cycle includes all of the familiar steps of metamorphosis that are common to insects, but it also includes photos of an amazing part of its life that is unique to the monarch. Each fall millions of these butterflies migrate to a few select locations in Mexico where they change from being independent animals to animals who survive as part of a colony.

## Annex Building Hallway

### Wild & Rural Photo Show (10:00 - 4:00)

Young Youth to Adult Friendly Display  
Lapeer Camera Club artist members will have on display visually enchanting photos of wild and rural landscapes from within Lapeer County.

## Annex Building West Large Room

### Make Your Own Black Gold (10:30 - 11:30)

Youth to Adult Friendly Program  
Campbell's Greenhouses Head Grower Kathy Miller will share with you her many years of composting knowledge. Learn to recycle your household and yard wastes into soil-enriching compost. Improve your soil and your plants will thank you with a glorious display.

### Michigan Reptile and Amphibian Live Exhibits (10:00 - 4:00)

Young Youth to Adult Friendly Hands on Exhibit  
Nature Discovery will have a live Michigan, reptile and amphibian exhibit on display, along with a Michigan insect display. Everyone will have an opportunity to experience the largest collection of Michigan snakes, turtles, lizards, frogs and salamanders in the state This unique walk-through exhibit will also provide youth a chance to handle and feed some of the animals.

### Michigan Turtles (12:00 - 12:30)

Young Youth to Adult Friendly Program  
Nature Discovery will use their live turtles to help explain the unique characteristics of Michigan's 10 species of turtles. Expect to get close to these pre-dinosaur animals and learn how to identify them.

### Michigan Snakes (1:30 - 2:00)

Young Youth to Adult Friendly Program  
Nature Discovery will use live Michigan snakes to teach about several of the 18 varieties of snakes that live in Michigan. You may have an opportunity to hold them and see why these reptiles are worthy of our respect.

### Michigan Frogs (3:00 - 3:30)

Young Youth to Adult Friendly Program  
Nature Discovery will be doing a program focused on Michigan frogs. They will talk about the Spring Peepers that sing through the first warm nights of each year and of the many other varieties that inhabit Michigan. Lively frogs will be a part of this experience.

## Historic Court House Lawn North East

### Pioneer Farm Tools (10:00 - 4:00)

Young Youth to Adult Friendly Activity  
The Lapeer Historical Society members will be on hand to let visitors shell corn the old fashioned way and to help visitors experience other historic down-on-the-farm tools.

### Maple Sap to Syrup (10:00 - 4:00)

Young Youth to Adult Friendly Activity  
Taste test maple sap, see how Maple trees are tapped for their sap and watch how the sap is transformed into the syrup.

### Rope Making (10:00 - 4:00)

Young Youth to Adult Friendly Activity  
Jack Worthington from Michigan Barn Preservation Network will demonstrate rope making with an old fashion rope making machine and will have several materials (samples) that are made into rope. Participants can turn the crank to make their own jump rope or lead rope for animals. A nominal fee will be charged for the materials used.

### Youth Ecology Project Displays (10:00 - 4:00)

Young Youth to Adult Friendly Display  
Local students will share projects they are working on to improve and enhance the natural environment around them.

### Build a Blue Bird House (12:00 - 2:00)

Youth to Adult Friendly Activity  
Materials, instructions and assistance will be available so participants can build their own blue bird house to take home. A fee of \$3.00 will be charged to cover the cost of materials.

## Historic Court House Lawn South East

### Conservation District Tree Sale (10:00 - 4:00)

Buy trees to take home and plant. The District's informative staff will be able to explain which trees grow best where and how properly to plant the trees.

### Michigan Forestry Trailer (10:00 - 4:00)

Young Youth to Adult Friendly Hands on Display  
Michigan Forestry Association will have a self guided mobile trailer where participants can see, explore and learn to identify our native species of trees.

### Emergency Management (10:00 - 4:00)

Young Youth to Adult Friendly Active Display  
Live "Tornado-in-a-box" demonstrations will be given by Emergency Management Director, Mary Strikeleather along with family preparedness educational material.

### Bird House Design and Bird Needs (1:00 - 2:00)

Youth to Adult Friendly Program  
Super bird guru, Mike Supernault, will have a variety of different bird house designs on display and will discuss bird house design, habitat requirements and other necessities to attract birds to your location.

### Fun Fund Raisers (10:00 - 4:00)

Quarter Toss ,toss dimes win what your catch, toss quarters choose from a selection of prizes.  
AM and PM silent auctions; garden seeders, nature books, prints, putting green, pup tents and many gently used and new items will be auctioned off.

Book Sales, new books include Golden Guides on fossils, rocks, minerals and stars; a variety of gently used nature books included in sale.

*Proceeds are used to pay for Wild Lapeer.*

## Historic Court House Lawn North West

### Hands on Wildlife Display (10:00 - 4:00)

Young Youth to Adult Friendly Program  
Seven Ponds Nature Center will be providing animal pelts, birds, and other specimens for people to handle and get an up close view of Michigan's Wildlife. Naturalists will be available for additional information and will answer your questions about our woodland critters.

### Earth Tunnel (11:00 - 4:00)

Young Youth to Adult Friendly Interactive Display  
Stroll through a tunnel that brings soil alive. See animal burrows, insects and reptiles in a natural-like habitat underground; experience soil layers and vegetation roots below instead of above ground.

**Farmers Market** (10:00 - 4:00)  
 Many of the same foods served at the Frontier Brunch will be available for sale for you to take home. Visit with farmers and learn about CSA's (Community Supported Agriculture). Michigan Thumb Organic will be selling farm members products, like organic cheese from Oliver Farms, or Hampshire Farm Bread. Flour will be for sale from Westwind Mill, eggs from Law Family Farm; plants from Boon Docks Water Plants and Perennials; potatoes from White Pine Farm or just make contacts for buying freezer beef, lamb, chicken, turkey, pork and other fine foods.

**Farmers Market Pavilion**

**Frontier Brunch -Breakfast** (11:00 - 1:00)  
 Breakfast type locally grown or raised foods will be served; they will include buckwheat and multi-grain pancakes, sausage links and eggs. Much of the farm food being served is also for sale to take home at the Farmers Market.

**Frontier Brunch -Lunch** (12:00 - 3:00)  
 Lunch food raised and processed locally will be served; old fashioned stone mill bread, pulled turkey, potato soup, hot dogs, hamburgers and French fried potatoes, baked potatoes or a dish of "All Blues" potatoes to choose from. Much of the farm food being served is also for sale to take home at the Farmers Market.

**Annrook Park**

**Stream Monitoring** (9:00 - 10:00)  
 Older Youth to Adult Friendly Activity  
 Darren Bagley, Natural Resource Agent from MSUE, will teach participants how to look for tiny critters that live in our rivers and streams. He will also explain how these critters tell us about the health of the creek in your backyard and the Flint River Watershed you may be living in.

**Park to Park Kayak Rides** (10:00 - 3:00)  
 Older Youth to Adult Friendly Activity  
 Lapeer Rotary club will be assisting Rocky's Great Outdoors, who will have demo kayaks for visitors to use for a brief exploration down Farmers Creek which is part of the Flint River watershed.

**Birding in Lapeer Parks** (10:30 - 11:30)  
 Youth to Adult Friendly Activity  
 Take a leisurely walk with bird expert Mike Supernault thru various Lapeer City Parks with the hope of seeing as many bird species as possible and discussing their habits and ecology. Binoculars are helpful for walk.

**Hunter Safety Demonstration** (10:00 - 4:00)  
 Youth to Adult Friendly Activity  
 Youth and adults can practice hitting floating ping pong balls with lasers attached to 22s and crossbows. Larry Hartley, Coordinator of the Hunter Safety Training Program in Lapeer County, will provide assistance to participants.

**Archery** (10:00 - 4:00)  
 Youth to Adult Friendly Activity  
 Bows and arrows will be available to participants to use, as skilled leaders teach how to properly handle a bow and shoot safely at targets in a pedestrian restricted zone with a large safety Kevlar net back drop.

**Historic Musket Display** (10:00 - 4:00)  
 View, learn and see a variety of muskets many of our ancestors used to harvest game to feed their families.

**Annrook Park Pavilion**

**Watershed Pledge** (10:00 - 4:00)  
 Young Youth to Adult Friendly Activity  
 Kids who come to the Green Arts Project booth can help create a masterpiece while learning how to protect the waters where they live. After they raise their hands to take the watershed pledge, they will paint their handprint on our large canvas that eventually will be displayed at local art studios. Each child also will make a smaller hand printed piece to take home to display with a free refrigerator magnet. Smocks and hand washing will be provided to participants.

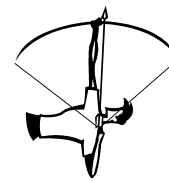
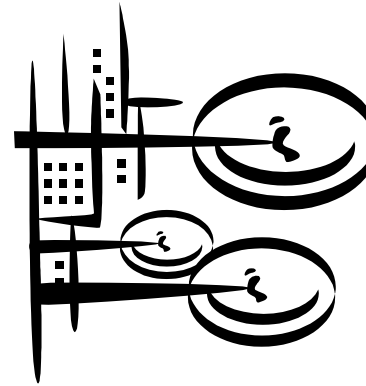
**Water Tunnel** (10:00 - 3:00)  
 Young Youth to Adult Friendly Interactive Display  
 Take a fish eye view of what a pristine stream and a polluted stream looks like, by going through a water tunnel display from Midland Conservation District.

**Ground Water Flow Demonstration** (10:00 - 4:00)  
 Young Youth to Adult Friendly Interactive Display  
 Parker Ostrander from AmeriCorps will give participants a chance to interact with a ground water flow model. They can place food coloring into an uncapped abandoned well and watch how quickly the dye can travel up through an artisan well or into lakes and streams.

**Sleeping Dragon Gallery**  
**Wild Lapeer Youth Art Exhibition** (10:00 - 4:00)  
 Young Youth to Adult Friendly Display  
 Student's artwork focused on an Earth Day Inspired theme, will be displayed in lovely downtown Lapeer at 340 W Nepessing at the Sleeping Dragon Gallery (next to Isola's).

**Opportunities Available;**  
 To have your organization, business or farm be part of the event please call Marian Listwak at (810-688-3192), email wildlapeer@usol.com or visit wildlapeer.com to learn more.

**Sponsored by:**  
 Lapeer County Parks,  
 Lapeer Downtown Business Association,  
 Circle K RV's,  
 K's Auto & Truck Service,  
 Great Lakes Bioregional Land Conservancy

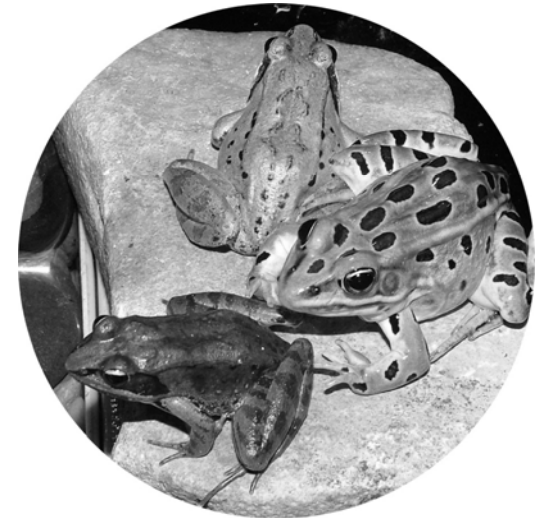


Something for everyone!



Wild Lapeer  
 2933 Burnside Rd.  
 North Branch, MI 48461

**PROGRAM GUIDE TO  
 4TH ANNUAL  
 WILD LAPEER  
 An Earth Celebration  
 Something for Everyone  
 Free Admission**



Presorted  
 Standard  
 US Postage Paid  
 Flint MI  
 Permit No 2

**Saturday  
 April 28, 10-4  
 Downtown Court House Square  
 (Stream monitoring training before Wild Lapeer at 9am)**